



Trabajo Original

Otros

Biochemical and histological changes produced by sweeteners and cytarabine in the brain of young rats

Cambios bioquímicos e histológicos producidos por edulcorantes y citarabina en el cerebro de ratas jóvenes

David Calderón Guzmán¹, Maribel Ortiz Herrera², Armando Valenzuela Peraza¹, Norma Osnaya Brizuela¹, Ernestina Hernández García³, Hugo Juárez Olguín³, Gerardo Barragán Mejía¹, Daniel Santamaría del Ángel¹ and Alberto Rojas Ochoa¹

¹Laboratory of Neurosciences. National Institute of Pediatrics (NIP). Mexico. ²Laboratory of Experimental Bacteriology, NIP. Mexico. ³Laboratory of Pharmacology, NIP and Faculty of Medicine. National Autonomous University of Mexico. Mexico

Abstract

Objective: The aim of this study was to evaluate the effect of splenda and stevia on dopamine and 5-HIAA levels, and some biomarkers of oxidative stress in the presence of cytarabine.

Methods: Forty-eight young male Wistar rats each with a weight of 80 g (four weeks of age), distributed in six groups of eight animals each, were treated as follows: group 1, control (NaCl 0.9% vehicle); group 2, cytarabine (0.6 g/kg); group 3, stevia (0.6 g/kg); group 4, cytarabine + stevia; group 5, splenda; and group 6, cytarabine + splenda. Cytarabine was given intravenously (IV) while stevia and splenda were administered orally for five days, using orogastric tube. At the end of treatment, the animals were sacrificed and glucose levels in blood were measured. The brains were dissected for histological analysis and homogenated to measure levels of dopamine, lipid peroxidation (TBARS), serotonin metabolite (5-HIAA), Na⁺, K⁺ ATPase activity, and glutathione (GSH), using validated methods.

Results: Sweeteners increased the glucose in animals that received cytarabine. Dopamine increased in cortex and decreased in striatum of animals that received stevia alone and combined with cytarabine. 5-HIAA decreased in striatum and cerebellum/medulla oblongata of animals that received sweeteners and cytarabine alone or combined. GSH increased in animals that received sweeteners and decreased with cytarabine. Lipoperoxidation decreased in groups that received sweeteners and cytarabine. Histopathological changes revealed marked degeneration of neuronal cells in animals treated with cytarabine.

Conclusion: These results show that sweeteners as stevia or splenda may lead to the onset of unfavorable changes in dopamine and 5-HIAA. Antioxidant effects may be involved. Besides, histological changes revealed marked lesions of neuronal cells in experimental animals treated with cytarabine.

Key words:

Cytarabine.
Dopamine. Oxidative stress. Sweeteners.

Resumen

Objetivo: el objetivo fue evaluar el efecto de edulcorantes (splenda y stevia) sobre los niveles de dopamina, ácido 5-hidroxiindolacético (HIAA) y algunos biomarcadores de estrés oxidativo en presencia de citarabina.

Métodos: cuarenta y ocho ratas Wistar machos con un peso aproximado de 80 g (cuatro semanas de edad), distribuidas en seis grupos de ocho animales cada uno, fueron tratados como sigue: grupo 1, control (NaCl 0,9% vehículo); grupo 2, citarabina (0,6 g/kg); grupo 3, stevia (0,6 g/kg); grupo 4, citarabina + stevia; grupo 5, splenda; y el grupo 6, citarabina + splenda. La citarabina fue administrada por vía intravenosa y la stevia y la splenda, por vía oral durante cinco días, utilizando una sonda orogástrica. Al final del tratamiento, los animales fueron sacrificados y se midieron los niveles de glucosa en sangre. Los cerebros fueron disecados para su análisis histológico y homogenizados para medir los niveles de dopamina, peroxidación lipídica (TBARS), metabolito de la serotonina (5-HIAA), actividad de la Na⁺, K⁺ ATPasa y glutatión (GSH), usando métodos validados.

Resultados: los edulcorantes aumentaron la glucosa en los animales que recibieron citarabina. La dopamina aumentó en la corteza y disminuyó en el estriado de los animales que recibieron stevia sola y combinada con citarabina. La 5-HIAA disminuyó en el estriado y el cerebelo/ médula oblongata de animales que recibieron edulcorantes y citarabina sola o combinada. El GSH se incrementó en los animales que recibieron edulcorantes. La lipoperoxidación disminuyó en los grupos que recibieron edulcorantes y citarabina. Estudios histopatológicos revelaron una degeneración neuronal importante en animales tratados con citarabina.

Conclusión: los resultados muestran que los edulcorantes como stevia o splenda pueden conducir a la aparición de cambios desfavorables en los niveles de dopamina y 5-HIAA. Los cambios histológicos revelaron, además, lesiones marcadas de células neuronales en animales tratados con citarabina.

Palabras clave:

Citarabina. Dopamina.
Estrés oxidante.
Edulcorantes.

Received: 28/04/2017 • Accepted: 28/10/2017

Calderón Guzmán D, Ortiz Herrera M, Valenzuela Peraza A, Osnaya Brizuela N, Hernández García E, Juárez Olguín H, Barragán Mejía G, Santamaría del Ángel D, Rojas Ochoa A. Biochemical and histological changes produced by sweeteners and cytarabine in the brain of young rats. *Nutr Hosp* 2018;35:194-200

DOI: <http://dx.doi.org/10.20960/nh.1245>

Correspondence:

Hugo Juárez Olguín. Laboratory of Pharmacology, National Institute of Pediatrics. Av. Imán, 1, 3º piso. Colonia Cuicuilco. 04530 Mexico City, Mexico
e-mail: juarezol@yahoo.com

INTRODUCTION

The industrialization of food processing in the twentieth century paralleled with loss of quality have given rise to increased palatability, digestibility, overconsumption and the current obesity epidemic (1). Containment of the obesity epidemic is compounded by the addictive properties of sugar which involve the dopamine receptors (2). Adolescents are the highest consumers of sugar sweetened drinks (3), and factors linked to glucose metabolism are involved in the etiology of several cancers. High glycemic index (GI) or high glycemic load (GL) diets, which chronically raise postprandial blood glucose, may increase cancer risk (4). In spite of this, cancer is actually the principal cause of death in children under 15 years old (5). Metabolic syndrome (MS), an important problem of the childhood in Mexico, is another kind of pathology that befalls on young patients with cancer (6). Today in Mexico, oncological diseases are the second leading cause of death in the general population. Official statistics reported 80% of prevalence diagnoses patients on treatment survive to malignant tumors (7). Chemotherapy is a useful tool to attack cancer and mellow down the sufferings which it entails, and cytarabine is the most common chemotherapeutic agent used in children (8), although its use is accompanied by elevation of monoamine concentrations in the brain regions (9). Guidelines on sugar consumption by the World Health Organization (WHO) recommend non-sugar sweeteners such as stevia and splenda as healthy sugar replacement alternatives (10). Recently, the cultivation of *Stevia rebaudiana Bertoni* has gained interest for its potential use as a non-caloric sweetener with antioxidant properties (11).

Some studies suggest that chemotherapeutic agents such as cytarabine induce the interaction of proteins and activating factor (GcMAF) that inhibit cancer cell proliferation and metastatic potential, and may lead to nitric oxide (NO) release (12).

Since free radicals are known to damage cell components (13), mainly plasma membrane lipids (14), nitric oxide is a neuromodulator; however, an extra amount may lead to cell damage by oxidative stress or by forming nitroso-glutathione (NOGSH) within the cell (15). The central nervous system (CNS) intervenes in the control of food consumption and free radicals (FR) and actively participates in the metabolic functions of the same (16). It has been demonstrated that many biological processes are influenced by mechanical changes in membrane lipid components (17), and regulates energy and glucose homeostasis by acting on hypothalamic neurocircuits and higher brain circuits such as the dopaminergic system (18). Plasma membrane phospholipids in brain are in close contact with structural proteins that are embedded in the lipid bilayer (19), and through which the ionic interchange is maintained by the action of Na⁺, K⁺ ATPase that stimulates Na⁺ and K⁺ flows (20). The inhibition of the Na⁺, K⁺ ATPase activity induces excitatory amino acids release within the central nervous system (21).

Based on the above backgrounds, the purpose of the present study is to compare the protective effect of stevia and splenda on the levels of dopamine and 5-HIAA monoamines, and selected oxidative stress markers in brain regions of young rats treated with cytarabine.

METHODS

Forty-eight young male Wistar rats each with a weight of 80 g (four weeks old), distributed in six groups of eight animals each, were treated as follows: group 1, control (NaCl 0.9% vehicle); group 2, cytarabine (0.6 g/kg); group 3, stevia (0.6 g/kg); group 4, cytarabine + stevia; group 5, splenda; and group 6, cytarabine + splenda. Cytarabine was given intravenously (IV) while stevia and splenda were administered orally for five days, using orogastric tube. At the end of treatment, the animals were sacrificed and glucose levels in blood were measured. The animals were sacrificed by decapitation at the end of the treatment, and their brains were immediately dissected in cortex, striatum, and medulla/oblongata and immersed in a solution of NaCl at 0.9% and maintained at 4 °C. In the last day of treatment, blood samples were obtained and used to measure the levels of glucose. Each brain region was homogenized in 3 ml of tris-HCl 0.05 M pH 7.2 and used to determine lipid peroxidation (TBARS), Na⁺, K⁺ ATPase activity, levels of glutathione (GSH), serotonin metabolite (5-HIAA) and dopamine, using previously validated methods. The samples were kept at -20 °C until their assessment and others were stained with eosin-nigrosin to evaluate the histological abnormalities. Rats were procured from the Bioterium of the Instituto Nacional de Pediatría of Mexico City, and housed eight per cage in clean plastic cages and allowed to acclimatize in the room environment for one day. Animals were maintained in a mass air displacement room with a 12-h light/12-h dark cycle at 22 ± 2 °C with a relative humidity of 50 ± 10%. Balanced food (Rodent diet 5001) and drinking water were given to the animals *ad libitum* before and during study. The study protocol was previously approved by the Committee of Laboratory Animals Care of the National Institute of Pediatrics. Besides, all experimental procedures were performed following the national and international guidelines for Animal Care.

TECHNIQUE TO MEASURE BLOOD GLUCOSE

The measurement of blood glucose was carried out at the end of the treatment. Two blood samples (20 µl each) were drawn from the tail-end without anticoagulant and placed on Accu-Chek® (Roche Mannheim, Germany) equipment reactive paper. The blood glucose concentrations were measured and reported in mg/dl.

MEASUREMENT OF DOPAMINE

The levels of dopamine were measured in the supernatant of tissue homogenized in HClO₄ after centrifugation at 9,000 rpm for ten minutes in a microcentrifuge (HettichZentrifugen, model Mikro 12-42, Germany), with a version of the technique reported by Calderón et al. (22). An aliquot of the HClO₄ supernatant, and 1.9 ml of buffer (0.003 M octyl-sulphate, 0.035 M KH₂PO₄, 0.03 M citric acid, 0.001 M ascorbic acid), were placed in a test tube. The mixture was incubated for five minutes at room temperature in total darkness, and subsequently the samples were read in a

spectrofluorometer (PerkinElmer® LS 55, England) with 282 nm excitation and 315 nm emission lengths. The FL WinLab version 4.00.02 software was used. Values were inferred in a previous standardized curve and reported as nMoles/g of wet tissue.

MEASUREMENT OF 5-HYDROXYINDOL ACETIC ACID (5-HIAA)

5-HIAA levels were measured in the supernatant of tissue homogenized in HClO₄ after centrifugation at 9,000 rpm for ten minutes in a microcentrifuge (HettichZentrifugen, model Mikro 12-42, Germany), with a modified version of the technique reported by Beck et al. (23). An aliquot of the HClO₄ supernatant, and 1.9 ml of acetate buffer 0.01M pH 5.5 were placed in a test tube. The mixture was incubated for five minutes at room temperature in total darkness, and subsequently, the samples were read in a spectrofluorometer (PerkinElmer® LS 55, England) with 296 nm excitation and 333 nm emission lengths. The FL WinLab version 4.00.02 software was used. Values were inferred in a previously standardized curve and reported as nM/g of wet tissue.

MEASUREMENT OF GLUTATHIONE (GSH)

GSH levels were measured from the supernatant of the homogenised tissue, which was obtained after centrifuging at 9,000 rpm during five minutes (Mikro 12-42 centrifuge, Germany) based on a modified method of Hissin and Hilf (24); 1.8 ml phosphate buffer pH 8.0 with EDTA 0.2%, 20 µl taken from the supernatant and 100 µl of ortho-phthaldehyde at 1 mg/ml in methanol were mixed in a test tube and incubated for 15 min at room temperature in absolute darkness. Following the incubation, the mixture was spectrophotometrically read in Perkin-Elmer® LS 55, with excitation and emission wavelengths of 350 and 420, respectively. FL WinLab version 4.00.02 software was used. Values were inferred from a previous standardized curve and expressed as nM/g.

MEASUREMENT OF TOTAL ATPase

The activity of ATPase was assayed according to the method proposed by Calderón et al (25); 1 mg (10%) w/v of homogenised brain tissue in tris-HCl 0.05 M pH 7.4 was incubated for 15 minutes in a solution containing 3 mM MgCl₂, 7 mM KCl, and 100 mM NaCl. To this, 0.5, 1, 2, 3, and 4 mM tris-ATP were added and incubated for another 30 min at 37 °C in a shaking water bath (Dubnoff Labconco); 100 µl 10% trichloroacetic acid w/v was used to stop the reaction, and samples were centrifuged at 100 g for five minutes at 4 °C. Inorganic phosphate (Pi) was measured in duplicates using one supernatant aliquot as reported by Fiske and Subbarow (26). The absorbance of a supernatant sample was read at 660 nm in a Helios-α, UNICAM spectrophotometer and expressed as mM Pi/g wet tissue per minute.

MEASUREMENT OF LIPID PEROXIDATION (TBARS)

Determination of TBARS was carried out using the modified method of Gutteridge and Halliwell (15), as described below: from the homogenized brain in tris-HCl 0.05 M pH 7.4, 1 ml was taken, and 2 ml of thiobarbaturic acid (TBA) which contains 1.25 g of TBA, 40 g of trichloroacetic acid, and 6.25 ml of concentrated chlorhydric acid (diluted in 250 ml of deionized H₂O) were added. Samples were heated to boiling point for 30 minutes (Thermomix® 1420), after which they were immersed in ice bath for five minutes and, finally, centrifuged at 700 g for 15 minutes (Sorvall® RC-5B Dupont). The absorbance of the supernatants tissues was read in triplicate at 532 nm in a spectrophotometer (Helios-α, UNICAM). The concentration of reactive substances to thiobarbaturic acid (TBA-RS) was expressed as µM of malondialdehyde/g of wet tissue.

HISTOLOGICAL ANALYSIS IN BRAIN REGIONS

Histological examination of the tissue was conducted after immediately following brain extraction. The tissues were gently rinsed with a physiological saline solution (0.9% NaCl) to remove blood and adhering debris. Brains were taken and fixed in a 10% neutral-buffered formalin solution for 24 h. The fixed specimens were then trimmed, washed and dehydrated in ascending grades of alcohol. These specimens were cleared in xylene, embedded in paraffin, sectioned at 4-6 mm thickness and stained with hematoxylin and eosin (H&E) and then examined microscopically (27).

STATISTICAL ANALYSIS

Analysis of variances (ANOVA) and Kruskal-Wallis test were used with their corresponding contrasts and previous variance homogeneity comparison. Values of p < 0.05 were considered as statistically significant (28). The JMP version 8.0.0 for academic was used.

RESULTS

The levels of blood glucose discretely increased in each of the treatments administered in the study groups without statistically significant difference (Fig. 1).

Dopamine concentration in cortex decreased significantly in the group treated with stevia + cytarabine when compared with those that received stevia alone (Fig. 2). Compared with the rest of the groups, this bioamine did not register significant differences. In striatum, an important reduction in the concentrations of dopamine was observed in all the groups when compared with the control group. The comparison among the groups treated with splenda or splenda + cytarabine did not show any differences; however, in the groups treated with stevia or stevia + cytarabine

bine, a significant reduction in the later could be appreciated. In cerebellum/medulla oblongata, a high significant reduction in dopamine concentration was found in the groups that received cytarabine, splenda, splenda + cytarabine and stevia + cytarabine with respect to the control. With the exception of the group treated with stevia, the same behavior was seen in those which were administered cytarabine. When the stevia group was compared with the stevia + cytarabine group, there was a significant decrease of this bioamine in the later.

In cortex, differences in the concentration of 5-HAA among the study groups were not observed (Fig. 3). In striatum, all the groups showed a significant reduction in the concentration of the bioamine when compared with the control. In cerebellum/medulla oblongata, a significant decrease was seen in the groups treated with splenda, splenda + cytarabine and stevia + cytarabine with respect to the control, while the same behavior was appreciated in the group that received splenda or splenda + cytarabine when compared with the group that was administered cytarabine alone.

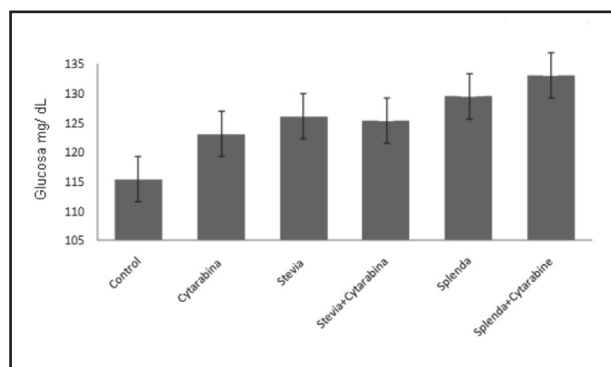


Figure 1. Levels of glucose in blood of young rats treated with cytarabine and sweeteners. Mean values ± SD.

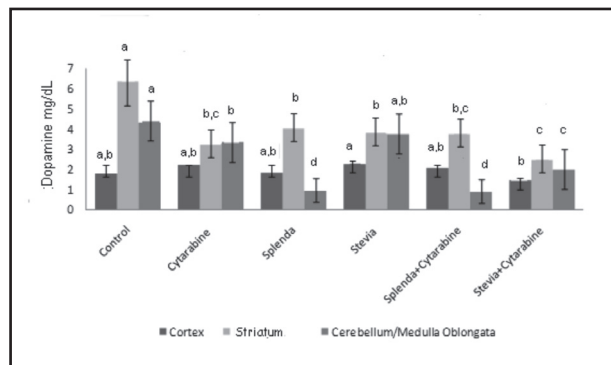


Figure 2. Levels of dopamine in brain regions of young rats treated with cytarabine and sweeteners. Levels not connected by same letter are significantly different. Cortex: Kruskal-Wallis $\chi^2 = 11.78$, $p = 0.037$; striatum: Kruskal-Wallis $\chi^2 = 52.04$, $p < 0.0001$; cerebellum/medulla oblongata: Kruskal-Wallis $\chi^2 = 110.47$, $p < 0.0001$.

The activity of GSH witnessed a significant decrease in the groups treated with splenda and splenda + cytarabine in the cortex, while in striatum the GSH activity reduced significantly in the group treated with splenda + cytarabine when compared with those that exclusively received splenda (Fig. 4). When comparing the activity of this bioamine among the group that received splenda + cytarabine with the control or cytarabine or splenda alone, a significant decrease was seen, while the comparison stevia vs stevia + cytarabine did not show any differences in cerebellum/medulla oblongata.

Lipid peroxidation in cortex reduced significantly in all the groups with respect to the control, and this was more evident in the group that received stevia (Fig. 5). In striatum, the same pattern was observed except in the group that received splenda + cytarabine. In cerebellum/medulla oblongata, a decrease in lipid peroxidation was seen in the groups with cytarabine, stevia and stevia + cytarabine in comparison with the control. The comparison of splenda vs splenda + cytarabine and stevia vs

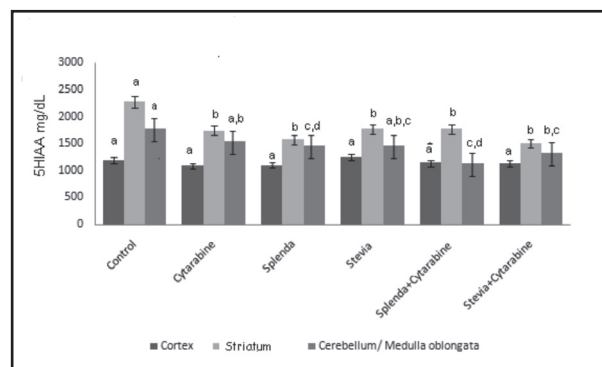


Figure 3. Levels of 5-HAA in brain regions of young rats treated with cytarabine and sweeteners. Levels not connected by same letter are significantly different. Cortex: Anova $F = 1.23$, $p = 0.29$; striatum: Kruskal-Wallis $\chi^2 = 30.99$, $p < 0.0001$; cerebellum/medulla oblongata: Kruskal-Wallis $\chi^2 = 60.98$, $p < 0.0001$.

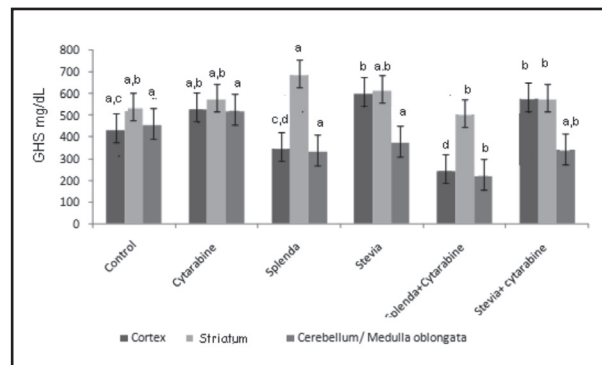


Figure 4. Levels of GSH in brain regions of young rats treated with cytarabine and sweeteners. Levels not connected by same letter are significantly different. Cortex: Anova $F = 21.50$, $p < 0.0001$; striatum: Anova $F = 2.29$, $p < 0.048$; cerebellum/medulla oblongata: Kruskal-Wallis $\chi^2 = 29.30$, $p < 0.0001$.

stevia + cytarabine did not show any differences in the levels of the bioamine.

ATPase activity in cortex and in all the groups witnessed a light increase with respect to the control. This increase was statistically significant in the groups treated with splenda, splenda + cytarabine and stevia + cytarabine (Fig. 6). Comparison among the groups treated with the antineoplastic or the sweeteners did not show significant differences. The bioamine showed significant increased activity in the group that received cytarabine + splenda when compared with animals treated with cytarabine only.

In striatum, there was no difference in the activity of the enzyme. However, in cerebellum/medulla oblongata, a significant reduction in the ATPase activity was observed in the group treated with stevia when compared with the control. When comparing the activity of the enzyme in the group that received only cytarabine with those treated with cytarabine + sweetener, a statistically significant difference was observed only in those that received stevia and stevia + sweetener.

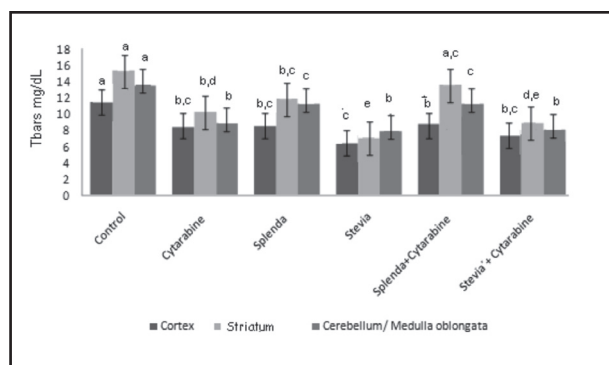


Figure 5.

Levels of Tbars (lipid peroxidation) in brain regions of young rats treated with cytarabine and sweeteners. Levels not connected by same letter are significantly different. Cortex: Anova $F = 21.50$, $p < 0.0001$; striatum: Anova = 2.29, $p < 0.048$; cerebellum/medulla oblongata: Kruskal-Wallis $\chi^2 = 29.30$, $p < 0.0001$.

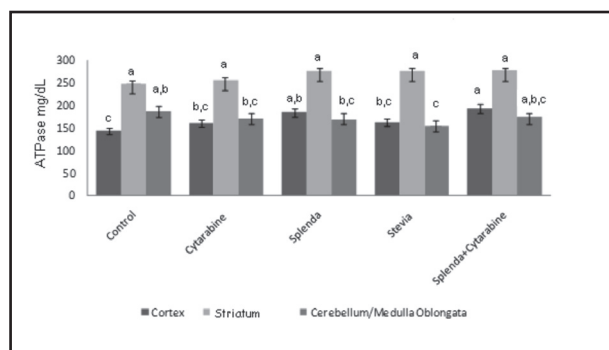


Figure 6.

Levels of ATPase activity in brain regions of young rats treated with cytarabine and sweeteners. Levels not connected by same letter are significantly different. Cortex: Anova $F = 9.62$.

HISTOLOGICAL ANALYSIS

The control animals' brains presented a normal cytoarchitecture, the well-defined form of the cellular and nuclear membrane being evident, with thin chromatin and homogenous neuropile in the three analyzed structures, cortex, striatum and cerebellum/medulla oblongata (Fig. 7A-C).

The treatment with cytarabine caused evident damage in the same structures analyzed. In the cortex (Fig. 7D), a reduction in cell size, loss of shape and evident pyknosis were observed in a significantly high number of cells (arrow head). In the striatum (Fig. 7E) the damage was slightly lower and cells were preserved, although the damage is evident, presenting cellular retraction and vacuolization in addition to pyknosis and loss of definite form (arrow head). In the cerebellum/medulla oblongata of rats treated with cytarabine (Fig. 7F) the same type of cell damage was found (arrow head).

In the panels (Fig. 8G-I) corresponding to cortex, striatum and cerebellum/medulla oblongata of rats treated with the splenda sweetener, there is slight cellular damage and the cytoarchitecture is very similar to that of the controls. In the cerebellum/medulla oblongata (Fig. 8I) we find more damaged cells than in cortex and striatum, without becoming significant (arrow head).

In the cortex, striatum and cerebellum/medulla oblongata sections of animals co-administered with splenda and cytarabine (Fig. 8J-L), damage is apparently similar to that of animals treated only with cytarabine (Fig. 7D-F), so we think that the sweetener splenda had no effect on those animals.

The analyzed structures of animals treated with the stevia sweetener (Fig. 9M-O for cortex, striatum and cerebellum/medulla oblongata respectively) do not present evident damage. In cortex, striatum and cerebellum/medulla oblongata of animals co-administered with stevia plus cytarabine (Fig. 9P-R) there are pyknotic cells with angled borders, cellular retraction and neuropile a little evident. However, minor damage is observed in cortex when it is compared with the cortex of animals treated only with cytarabine (Figs. 9P vs 7D), which suggests a slight protective effect of stevia against damage induced by cytarabine in the cortex. Striatum and cerebellum/medulla oblongata of animals with co-administration of stevia with cytarabine (Figs. 9Q and R) have a similar damage produced only with cytarabine.

DISCUSSION

Consumption of sugar-sweetened beverages may be one of the dietary causes of metabolic disorders (29). In the present study, the sweeteners slightly increased the glucose levels in blood of animals that received cytarabine, suggesting hypoinsulinemia effects.

Precursors of neuroactive substances can be obtained from dietary sources, which can affect the resulting production of such substances in the brain (30). The brain levels of dopamine in males can be controlled by an intake of tyrosine in food, and chronic food restriction induces dopamine conservation (31). However, in the

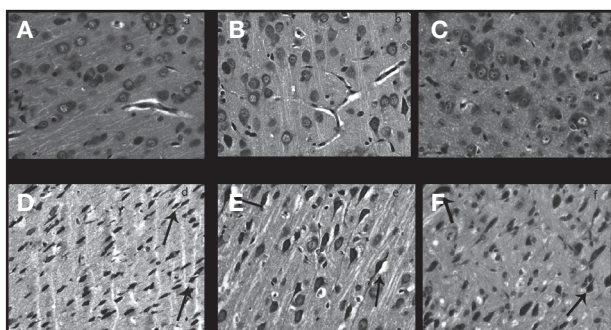


Figure 7.

Micrographs of cortex (A), striatum (B) and cerebellum/medulla oblongata (C) of control rats, where normal cells are seen, with well-defined, rounded cysts, nucleus with evident thin chromatin. In cortex (D), striatum (E) and cerebellum/medulla oblongata (F) of animals treated with cytarabine, morphological alterations such as pyknotic cells characterized by gradual acidophilia, evidenced by darkening of the nucleus and cytoplasm, contraction of the pericarp and loss of the boundaries of cytoplasmic membranes, spindle cells and angled edges (arrow heads), can be observed.

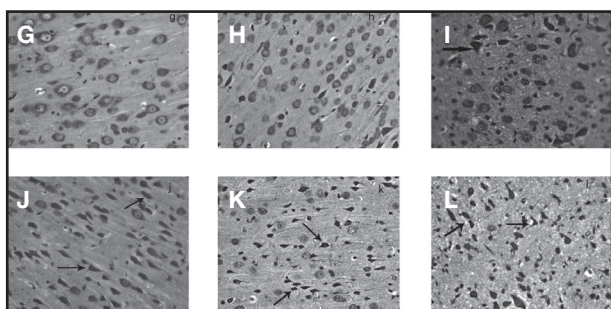


Figure 8.

Micrograph of cortex (G), striatum (H) and cerebellum/medulla oblongata (I) of animals treated with splenda sweetener. Cells with normal morphology were found in cortex and striatum (G and H), as well as in the cerebellum/medulla oblongata a slight damage was found with cells in the degeneration process (I, indicated by the arrow). In J, K and L cells, corresponding to cortex, striatum and brain stem of animals co-administered with splenda and cytarabine respectively, damaged cells are seen, although slightly smaller than in the cells of animals treated with cytarabine alone.

present study dopamine increased in cortex and decreased in striatum of animals that received stevia alone or combined with cytarabine, suggesting changes in the hypothalamus for the control of energy homeostasis and within the brain regions related with rewards (32). These results were contrary to those of Abhilash et al. (33), who found that other artificial sweeteners as aspartame decreased dopamine in corpus striatum and cerebral cortex, and serotonin in corpus striatum.

With respect to 5-HIAA levels, precursor of serotonin, it decreased in striatum and cerebellum/medulla oblongata of animals that received sweeteners and cytarabine alone or combined. These findings coincide with those of El-Merahbi et al. (34), who pinpointed that peripheral serotonin has an impact on the regulation of the function of the organs involved in glucose and lipid homeostasis. Indeed, peripheral 5HT plays an important role in

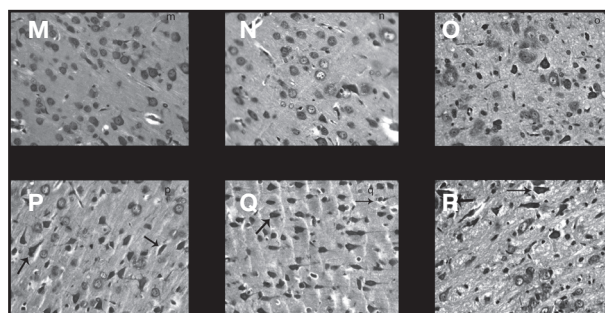


Figure 9.

Micrograph of cortex (M), striatum (N) and cerebellum/medulla oblongata (O) of animals administered with stevia sweetener. Normal cytoarchitecture with homogeneous distribution and well defined forms in cortex and striatum are observed. In figure O, which corresponds to cerebellum/medulla oblongata, some cells in the process of degeneration are appreciated, but nucleus and nucleolus are still visible. Cortex (P) striatum (Q) and cerebellum/medulla oblongata (R) of rats with co-administration of stevia and cytarabine also showed cells damaged in the process of degeneration, but in a smaller number than those treated only with cytarabine.

the regulation of glucose homeostasis through the differential expression and activation of 5-HT membrane receptors on the surface of hepatocytes, adipocytes and pancreatic β -cells (35).

GSH concentration increased in striatum of animals that received sweeteners (splenda and stevia) and decreased with the cytarabine administration. These results suggest neuroprotection and antioxidant effects, and coincide with previous reports of stevia, a diterpenic carboxylic alcohol with three glucose molecules, mainly used as a substitute for non-alcoholic sweetener (10).

Lipoperoxidation levels decreased in cortex, striatum and cerebellum/medulla oblongata regions in groups that received sweeteners and cytarabine. This effect of neuroprotection could be due to polar compounds obtained during the extraction of compounds like chlorophylls, carotenoids, phenolic and flavonoids involved in stevia and splenda. These substances are not physiologically inert compounds and their consumption may have potential biological mechanisms which may impact on energy balance and metabolic function (36).

Ca^{2+} , Mg^{2+} ATPase activity increased in cortex and striatum regions, and decreased in cerebellum/medulla oblongata of animals that received sweeteners and cytarabine. These results suggest that glucose concentration, which mimics fasting, decreased intracellular NADPH and increased Na^{+} concentration in single arcuate nucleus neurons, of the body's energy state, which subsequently exhibited Ca^{2+} responses to lower glucose (37).

CONCLUSIONS

These results show sweeteners as stevia or splenda may lead to the onset of unfavorable changes in biogenic amines, dopamine and 5-HIAA, independent of significant effects of cytarabine administration. Antioxidant effects may be involved. Besides, histological changes revealed marked lesions of neu-

ronal cells in experimental animals treated with cytarabine compared to those in the normal controls. Further studies are needed to confirm the opposing effects of high dietary glucose levels on risks of cancer.

ACKNOWLEDGMENT

We thank Dr Cyril Nndi Nwoye, an expert translator and a native English speaker, for reviewing and correcting the manuscript.

REFERENCES

- Bilton R. Averting comfortable lifestyle crises. *Sci Prog* 2013;96:319-68.
- Pandit R, Omrani A, Luijendijk MC, De Vrind VA, Van Rozen AJ, Ophuis RJ. Melanocortin 3 receptor signaling in midbrain dopamine neurons increases the motivation for food reward. *Neuropsychopharmacology* 2016;41(9):2241-51. DOI: 10.1038/npp.2016.19.
- Reichelt AC, Abbott KN, Westbrook RF, Morris MJ. Differential motivational profiles following adolescent sucrose access in male and female rats. *Physiol Behav* 2016;157:13-9.
- Sieri S, Agnoli C, Pala V, Grioni S, Brighenti F, Pellegrini N, et al. Dietary glycemic index, glycemic load, and cancer risk: Results from the EPIC-Italy study. *Sci Rep* 2017;7:9757.
- Ross JA, Severson RK, Pollock BH, Robison LL. Childhood cancer in the United States. A geographical analysis of cases from the Pediatric Cooperative Clinical Trials groups. *Cancer* 1996;77:201-7.
- Herrera-Silva JC, Treviño-Moore A, López-Beltrán AL. Metabolic syndrome in cancer patients during chemotherapy treatment. *Bol Med Hosp Infant Mex* 2008;65:110-20.
- Increases the incidence of cancer in children. Available from: www.gene-roysaludreproductiva.gob.mx/article.2006.
- Gabor KM, Schermann G, Lautner-Csorba O, Raros F, Erdelyi DJ. Impact of single nucleotide polymorphisms of cytarabine metabolic genes on drug toxicity in childhood acute lymphoblastic leukemia. *Pediatr Blood Cancer* 2015;62:622-8.
- Matsutani T, Tamaru M, Hayakawa Y, Nagayoshi M, Nakahara T, Tsukada Y. A neurochemical study of developmental impairment of the brain caused by the administration of cytosine arabinoside during the fetal or neonatal period of rats. *Neurochem Res* 1983;8:1295-306.
- Stuckler D, Reeves A, Loopstra R, McKee M. Textual analysis of sugar industry influence on the World Health Organization's 2015 sugars intake guideline. *Bull World Health Organ* 2016; 94:566-73.
- Ruiz Ruiz JC, Moguel Ordóñez YB, Matus Basto Á, Segura Campos MR. Antioxidant capacity of leaf extracts from two *Stevia rebaudiana* Bertoni varieties adapted to cultivation in Mexico. *Nutr Hosp* 2014;31:1163-70.
- Ruggiero M, Ward E, Smith R, Branca JJ, Noakes D, Morucci G, et al. Oleic acid, deglycosylated vitamin D-binding protein, nitric oxide: A molecular triad made lethal to cancer. *Anticancer Res* 2014;34:3569-78.
- Hogg N, Singh RJ, Kalyanaram B. The role of glutathione in the transport and catabolism of nitric oxide. *FEBS Lett* 1996;382:223-8.
- Beckman JS, Beckman TW, Chen J, Marshall PA, Freeman BA. Apparent hydroxyl radical production by peroxynitrite: Implications for endothelial injury from nitric oxide and superoxides. *Proc Natl Acad Sci USA* 1990;87:1624-9.
- Gutteridge JM, Halliwell B. The measurement and mechanism of lipid peroxidation in biological systems. *Trends Biochem Sci* 1990;15:129-35.
- Driver AS, Kodavanti PR, Mundy WR. Age-related changes in reactive oxygen species production in rat brain homogenates. *Neurotoxicol Teratol* 2000;22:175-81.
- Shamitko-Klingensmith N, Molchanoff KM, Burke KA, Magnone GJ, Legleiter J. Mapping the mechanical properties of cholesterol-containing supported lipid bilayers with nanoscale spatial resolution. *Langmuir* 2012;28:13411-22.
- Vogt MC, Brüning JC. CNS insulin signaling in the control of energy homeostasis and glucose metabolism - From embryo to old age. *Trends Endocrinol Metab* 2012;24:76-84.
- Swapna I, Sathya KV, Murthy CR, Senthikumar B. Membrane alterations and fluidity changes in cerebral cortex during ammonia intoxication. *Neuro-Toxicol* 2005;335:700-4.
- Stefanello FM, Chiarani F, Kurek AG. Methionine alters Na⁺, K⁺ ATPase activity, lipid peroxidation and nonenzymatic antioxidant defences in rat hippocampus. *Int J Dev Neurosc* 2005;23:651-6.
- Calderón GD, Juárez OH, Hernández GE, Labra RN, Barragán MG, Trujillo JF, et al. Effect of an antiviral and vitamins A,C,D on dopamine and some oxidative stress markers in rat brain exposed to ozone. *Arch Biol Sci Belgrade* 2013;65:1371-9.
- Calderón GD, Osnaya BN, García AR, Hernández GE, Guillé PA. Levels of glutathione and some biogenic amines in the human brain putamen after traumatic death. *Proc West Pharmacol Soc* 2008;51:25-32.
- Beck O, Palmskog G, Hultman E. Quantitative determination of 5-hydroxyindole-3-acetic acid in body fluids by HPLC. *Clin Chim Acta* 1977;79:149-54.
- Hissin PJ, Hilf R. A fluorometric method for determination of oxidized and reduced glutathione in tissue. *Anal Biochem* 1974;4:214-26.
- Calderón-Guzmán D, Espitia-Vázquez I, López-Domínguez A, Hernández-García E, Juárez-Olguín H. Effect of toluene and nutritional status on serotonin, lipid peroxidation levels and Na⁺/K⁺ATPase in adult rat brain. *Neurochem Res* 2005;30:619-24.
- Fiske CH, Subbarow Y. The colorimetric determination of phosphorus. *J Biol Chem* 1972;66:375-400.
- Luna LT. Manual of Histologic Staining Methods of the Armedforce Institute of Pathology. New York: McGraw Hill Book Co.; 1968. pp. 1-39.
- Castilla-Serna L. Practical Statistical Manual for Health Sciences. 1st ed. Mexico DF: Ed. Trillas; 2011.
- Anton SD, Martin CK, Han H, Coulon S, Cefalu WT, Geiselman P, et al. Effects of stevia, aspartame, and sucrose on food intake, satiety, and postprandial glucose and insulin levels. *Appetite* 2010;55:37-43.
- Sasaki K. Nutrition and dopamine: An intake of tyrosine in royal jelly can affect the brain levels of dopamine in male honeybees (*Apis mellifera* L.). *J Insect Physiol* 2016;87:45-52.
- Carr KD. Nucleus accumbens AMPA receptor trafficking upregulated by foodrestriction: An unintended target for drugs of abuse and forbidden foods. *Curr Opin Behav Sci* 2016;9:32-9.
- Yoon YR, Baik JH. Melanocortin 4 receptor and dopamine D2 receptor expression in brain areas involved in food intake. *Endocrinol Metab (Seoul)* 2015;30:576-83.
- Abhilash M, Alex M, Mathews VV, Nair RH. Chronic effect of aspartame on ionic homeostasis and monoamine neurotransmitters in the rat brain. *Int J Toxicol* 2014;33:332-41.
- El-Merahbi R, Löffler M, Mayer A, Sumara G. The roles of peripheral serotonin in metabolic homeostasis. *FEBS Lett* 2015;589:1728-34.
- Cataldo LR, Cortés VA, Galgani JE, Olmos PR, Santos JL. Role of peripheral serotonin in the insulin secretion and glucose homeostasis. *Nutr Hosp* 2014;30:498-508.
- Burke MV, Small DM. Physiological mechanisms by which non-nutritive sweeteners may impact body weight and metabolism. *Physiol Behav* 2015;152:381-8.
- Kurita H, Xu KY, Maejima Y, Nakata M, Dezaki K. Arcuate Na⁺, K⁺-ATPase senses systemic energy states and regulates feeding behavior through glucose-inhibited neurons. *Am J Physiol Endocrinol Metab* 2015;309:E320-33.