

OR 949

Incidence of high body mass index in critically ill cancer patients

Silvio A. Ñamendys-Silva^{1,2,3}, Humberto Guevara-García¹, Juan M. Arredondo-Armenta^{1,3}, Mireya Barragán-Dessavre^{1,3}, Andoreni R. Bautista-Ocampo¹, Francisco J. García-Guillén¹, Bertha M. Córdova-Sánchez¹, Abelardo Meneses-García¹ and Ángel Herrera-Gómez¹

¹Department of Critical Care Medicine. Instituto Nacional de Cancerología. Mexico City, Mexico. ²Department of Critical Care Medicine. Instituto Nacional de Ciencias Médicas y Nutrición Salvador Zubirán. Mexico City, Mexico. ³Department of Critical Care Medicine. Fundación Clínica Médica Sur. Mexico

Received: 25/03/2017

Accepted: 05/04/2017

Correspondence: Silvio A Ñamendys-Silva. Department of Critical Care Medicine. Instituto Nacional de Cancerología. Av. San Fernando, 22. Col. Sección XVI, Delegación Tlalpan. 14080 México City, Mexico

e-mail: snamendys@incan.edu.mx

DOI: 10.20960/nh.949

ABSTRACT

Objective: The aims of this study were to describe the incidence of obesity and overweight in critically ill cancer patients, and to evaluate the clinical characteristics and Intensive Care Unit (ICU) outcomes of critically ill cancer patients with obesity and overweight.

Methods: An observational cohort study. There were no interventions.

Results: During the study period, 483 critically ill cancer patients were admitted to ICU, and 59.2% of them (258 patients) had high body mass index (BMI). Comparing the groups of patients with BMI < 25 kg/m² and ≥ 25 kg/m², we observed that those with BMI ≥ 25

kg/m² were older at the time of admission to the ICU. The global mortality in ICU was of 22.4%. ICU mortality was similar between patients with BMI < 25 kg/m² and ≥ 25 kg/m² (21.3% versus 23.0%, p = 0.649). Univariate analysis indicated that the following five factors were associated with ICU death in patients with BMI ≥ 25 kg/m² as the outcome variable of interest: age, sepsis, invasive mechanical ventilation, type 2 diabetes, ≥ two organ failures. Multivariate analysis identified ≥ two organ failures as independent prognostic factor of ICU death.

Conclusion: Critically ill cancer patients have a high incidence of high BMI; approximately six of every ten patients admitted to the ICU with a serious condition are overweight or show several degrees of obesity. The ICU mortality of the patients with a body mass index < 25 kg/m² and ≥ 25 kg/m² was similar. The independent prognostic factor of ICU death in critically ill patients with a BMI ≥ 25 kg/m² was the number of organ dysfunctions, especially when two or more organs were affected.

Key words: Incidence. High body mass index. Critically ill cancer patients. Intensive Care Unit. Obesity. Outcomes.

RESUMEN

Objetivo: Describir la incidencia de obesidad y sobrepeso en pacientes graves con cáncer y evaluar las características clínicas y el pronóstico de los pacientes oncológicos gravemente enfermos con sobrepeso y obesidad.

Método: Estudio observacional y descriptivo. No se realizó ninguna intervención.

Resultados: Durante el periodo de estudio, 483 pacientes graves con cáncer fueron ingresados a la unidad de cuidados intensivos (UCI); el 59.2% (258 pacientes) tuvo índice de masa corporal (IMC) elevado. Al comparar los pacientes con IMC < 25 kg/m² y con IMC ≥ 25 kg/m², se observó que los pacientes con IMC ≥ 25 kg/m² eran de mayor edad al momento de ingresar en la UCI. La mortalidad en la UCI fue del 22.4%. La mortalidad fue similar en los grupos con IMC < 25 kg/m² y ≥ 25 kg/m² (21.3% versus 23.0%, p = 0.649). El análisis multivariado determinó que las siguientes variables fueron asociadas con muerte

en la UCI en el grupo de pacientes con $\text{IMC} \geq 25 \text{ kg/m}^2$: edad, sepsis, ventilación mecánica invasiva, diabetes mellitus tipo 2 y cursar con dos o más fallas orgánicas. El análisis multivariado identificó como factor pronóstico independiente para muerte en la UCI cursar con dos o más fallas orgánicas.

Conclusión: los pacientes graves con cáncer tienen una alta incidencia de IMC elevado; aproximadamente seis de cada diez pacientes ingresados en la UCI con una condición que pone en peligro la vida tienen sobrepeso o son obesos. La mortalidad fue similar en los grupos con $\text{IMC} < 25 \text{ kg/m}^2$ y $\geq 25 \text{ kg/m}^2$. En el grupo de pacientes con $\text{IMC} \geq 25 \text{ kg/m}^2$ se identificó como factor pronóstico independiente para muerte en UCI el número de fallas orgánicas especialmente cuando dos o más órganos están afectados.

Palabras claves: Incidencia. Índice de masa corporal elevado. Paciente grave con cáncer. Unidad de Cuidados Intensivos. Obesidad. Pronóstico.

INTRODUCTION

Overweight is defined as a body mass index (BMI) from 25 to 29.9 kg/m^2 and obesity, as a BMI higher than 30 kg/m^2 (1,2). Worldwide, obesity has doubled since 1980, and in 2014 more than 1.9 billions of adults over 18 years were overweight, more than 600 million of whom are obese (1,2). In 2012, the national health survey reported that 73% of women and 69.4% of men in Mexico have some degree of obesity or overweight (3). Currently, high BMI is considered as a major health problem that is associated directly with high mortality and serves as a trigger to develop cardiovascular, metabolic, musculoskeletal and oncologic diseases (4,5). According to data from the Institute for Health Metrics and Evaluation (IHME) for 2010, 70% of the adult population over 20 years had some degree of obesity or overweight (6). Obesity and overweight are considered as chronic inflammatory processes with consequent changes in immune response of acute events, such as sepsis (7-12). It has been reported that obesity is associated with 20% in women and 14% in men of all causes of death of oncologic patients (13), and obesity is considered to be a factor related to the development of multiple neoplasia (10). However, in the context of critically

ill oncologic patients with high BMI, the impact on mortality is unknown. Different reports have described that in patients with sepsis and septic shock, obesity is a protective factor against death (14-18).

The purpose of this study was to describe the incidence of obesity and overweight in critically ill cancer patients, and to evaluate the clinical characteristics and Intensive Care Unit (ICU) outcomes of critically ill cancer patients with obesity and overweight.

METHODS

This prospective, observational cohort study was performed at the Instituto Nacional de Cancerología (INCan) located in Mexico City. We included all consecutive critically ill cancer patients admitted to the ICU during the period between January 2013 and April 2015. Critically ill cancer patients over 18 years of age with more than 12 hours of stay in the ICU were included. We registered the demographic, clinical and laboratory data of the patients during their stay in the ICU, including age, gender, weight at admission to ICU, size, oncologic disease, comorbidities, organic support requirement, days of ICU stay, days of invasive mechanical ventilation, sepsis and mortality in the ICU. Sepsis was defined according to the Third International Consensus Definitions for Sepsis and Septic Shock (19). We calculated the Acute Physiology and Chronic Health Evaluation (APACHE) II score (20) during the first 24 hours of ICU stay; Sequential Organ Failure Assessment (SOFA) (21,22) and the Mexican sequential organ failure assessment (MEXSOFA) scores (23) for the evaluation of organic failures were also calculated. The APACHE II, SOFA and MEXSOFA scores were calculated with the worst clinical and laboratory values during the first 24 hours of ICU stay. We calculated the BMI with the weight and size recorded at the time of the acute event for which the patient admitted to the ICU, and data were stratified according to the criteria of the World Health Organization and the Mexican Official Standard (*Norma Oficial Mexicana*, NOM-008-SSA3-2010) for the treatment of overweight and obesity. BMI was categorized as $< 25 \text{ kg/m}^2$ and $\geq 25 \text{ kg/m}^2$. Performance status was measured using the Eastern Cooperative Oncology Group performance status scale (24):

- 0: fully active, able to carry on all pre-disease performance without restriction.

- 1: restricted in physically strenuous activity but ambulatory and able to carry out.
- 2: ambulatory and capable of all self-care but unable to carry out any work activities; up and about more than 50% of waking hours work of a light or sedentary nature (e.g., light house work, office work).
- 3: capable of only limited self-care, confined to bed or chair more than 50% of waking hours.
- 4: completely disabled; cannot carry on any self-care; totally confined to bed or chair.

The Bioethics Committee of INCAN approved this study, and the need for informed consent was waived.

Descriptive statistics were used for the data presentation. The Kolmogorov-Smirnov test was performed to determine the distribution of the data. Numerical variables are expressed as the mean and standard deviation, or as median values with their respective interquartile range for the variables with normal distribution. The categorical or nominal variables are expressed as a percentage. To compare the continuous variables, we used Student's t test or Mann-Whitney U test according to the sample distribution. For the analysis of the categorical variables, the χ^2 test was used. Survival curves were constructed using the Kaplan-Meier method, and compared with the log-rank method. Univariate and multivariate logistic regressions were used to identify factors associated with hospital mortality. Variables with a $p < 0.2$ in the univariate analysis were entered into the model using a forward stepwise procedure. The results were summarized as odds ratios (ORs) and respective 95% confidence intervals (CI). The area under the receiver operating characteristic curve was used to evaluate the ability of the model to discriminate between patients who lived and those who died (discrimination). Goodness-of-fit (Hosmer-Lemeshow) was calculated to assess the relevance of the logistic regression model. In all cases, a p value of < 0.005 was considered as statistically significant. SPSS 22.0 was used.

RESULTS

During the study period, 483 critically ill cancer patients were admitted to the ICU; 59.2% (258 patients) had high BMI. The mean age was 48.4 ± 16.6 years, and 53.2% of the patients were women. One hundred and twenty-one ICU admissions (25.1%) were due to septic shock. The second most common cause for ICU admission was acute respiratory failure, with 82 (17.2%) ICU admissions, and all of those patients required mechanical ventilation. Table I shows the clinical characteristics of the patients on admission to the ICU. Comparing the groups of patients with BMI $< 25 \text{ kg/m}^2$ and $\geq 25 \text{ kg/m}^2$, we observed that those with BMI $\geq 25 \text{ kg/m}^2$ were older at the time of admission to the ICU (Table II). Patients with BMI $\geq 25 \text{ kg/m}^2$ had a tendency to require longer invasive mechanical ventilation. The global mortality in ICU was of 22.4%. ICU mortality was similar between patients with BMI $< 25 \text{ kg/m}^2$ and $\geq 25 \text{ kg/m}^2$ (21.3% versus 23.0%, $p = 0.649$) (Table II). Figure 1 shows the survival curves during the hospital stay of patients with BMI $< 25 \text{ kg/m}^2$ and $\geq 25 \text{ kg/m}^2$.

When comparing patients with ≤ 2 and ≥ 3 organ failures, in the group of BMI $\geq 25 \text{ kg/m}^2$, we observed a higher mortality in patients with ≥ 3 organ failures at the time of ICU admission (15.5% [36/231] versus 54.5% [30/55], $p < 0.001$).

Univariate analysis indicated that the following five factors were associated with ICU death in patients with BMI $\geq 25 \text{ kg/m}^2$ as the outcome variable of interest: age, sepsis, invasive mechanical ventilation, type 2 diabetes, \geq two organ failures (Table III). Multivariate analysis identified ≥ 2 organ failures as independent prognostic factor of ICU death (Table III).

DISCUSSION

The main findings of the present study were as follow:

1. The incidence of high BMI was 59.2%.
2. The group of patients with BMI $\geq 25 \text{ kg/m}^2$ were older, and required long-term mechanical ventilation.

3. The ICU mortality of patients with BMI $< 25 \text{ kg/m}^2$ and $\geq 25 \text{ kg/m}^2$ was similar. The ICU mortality in critically ill patients with a BMI $\geq 25 \text{ kg/m}^2$ depends primarily on the number of organ failures, especially when two or more organs are affected.

The incidence of high BMI in patients enrolled in the present study was higher than those described by other authors, who have reported an incidence ranging from 5-25% (5,7,8,14,25-27), similar to the data shown in the national health survey of 2012. In the general population, an increase in the incidence of oncologic diseases was observed, which may be associated with the advent of new diagnostic techniques and treatment protocols for oncologic patients, thus allowing an improvement of the survival rate. The above is a possible explanation for the fact that oncologic patients have anthropometric characteristics similar to the general population.

Critically ill oncologic patients have the same risk to develop cardiovascular and metabolic diseases. The group of patients with overweight and obesity are at a major risk of developing chronic diseases, such as systemic arterial hypertension and diabetes mellitus; however, in our study, less than 20% of the patients had a history of those clinical entities (15,28).

The organ failure that occurred more frequently in patients with a BMI $\geq 25 \text{ kg/m}^2$ was respiratory failure; however, the incidence was similar in the group of BMI $< 25 \text{ kg/m}^2$ although overweight and obese patients have decreased lung compliance, functional residual capacity and total vital capacity (29-33). In addition to the pathophysiological differences in the respiratory mechanics of both groups, the use of long-term mechanical ventilation was only observed in the group of BMI $\geq 25 \text{ kg/m}^2$ compared to those with BMI $< 25 \text{ kg/m}^2$. Patients with a high BMI have an increased risk to develop acute respiratory distress syndrome, and therefore need a longer ventilatory support without influencing in their prognosis (33,34).

Several authors have described that patients without cancer with certain degrees of obesity have better survival to clinical conditions that endanger life during the ICU stay, which has been defined as paradoxical obesity (15,26,27). In contrast, the results of the present study, which included only critically ill oncologic patients, failed to establish an

association between high BMI and better prognosis in ICU; therefore, the ICU mortality of patients with BMI $< 25 \text{ kg/m}^2$ and $\geq 25 \text{ kg/m}^2$ was similar. In the study by El-Solh et al. (35), morbidly obese patients in a medical ICU found the presence of organ failures to be the strongest independent predictor of mortality in these patients. Our study found that the ICU mortality in critically ill patients with a BMI $\geq 25 \text{ kg/m}^2$ depends primarily on the number of organ failures, especially when two or more organs are affected.

It is known that paradoxical obesity represents a good prognostic factor in the evolution of certain entities, such as in acute coronary syndromes, chronic heart failure, chronic renal disease and pneumonia (36-39). Gruber et al. described the concept of paradoxical obesity in 2002 by suggesting obesity as a good prognostic factor in patients undergoing percutaneous transluminal coronary angioplasty in short and long term (36). Recently, González et al. (37) reported that ambulatory patients with cancer and sarcopenia (low rate of fat-free mass) have a higher risk of death. The few reports that include oncologic patients suggest that obesity is a factor to consider in the response to oncologic treatment, and in the progression and resolution of oncologic disease over the medium or long term (40-42). In our institution, there are no statistics regarding the incidence of overweight and obesity in oncologic patients. According to the results of the present study, approximately six of every ten patients admitted for a serious condition to the ICU are overweight or show some degree of obesity, which could be a projection of high BMI in the oncologic population treated at our institution.

The main limitations of this work are as follows:

1. It represents the experience of a single health institution.
2. The relatively small sample size.

CONCLUSION

Critically ill cancer patients have a high incidence of high BMI; approximately six of every ten patients admitted to the ICU with a serious condition are overweight or show several degrees of obesity. The ICU mortality of the patients with a body mass index $< 25 \text{ kg/m}^2$ and $\geq 25 \text{ kg/m}^2$ was similar. The independent prognostic factor of ICU death in critically ill

patients with a BMI ≥ 25 kg/m² was the number of organ dysfunctions, especially when two or more organs are affected.

ACKNOWLEDGMENTS

We thank the nurses and medical staff of the Intensive Care Unit at the Instituto Nacional de Cancerología, Mexico City, for their assistance in the care of these patients.

REFERENCES

1. Organización Mundial de la Salud. Obesidad y sobrepeso. Disponible en: <http://www.who.int/mediacentre/factsheets/fs311/es/>. Accessed 22 February 2017.
2. SEGOB. Diario oficial de la Federación. NORMA Oficial Mexicana NOM-008-SSA3-2010, Para el tratamiento integral del sobrepeso y la obesidad. Disponible en: http://www.dof.gob.mx/nota_detalle.php?codigo=5154226&fecha=04/08/2010. Accessed 22 February 2017.
3. ESANUD: Encuesta Nacional de Salud y Nutrición. Resultados Nacionales 2012. Disponible en: <http://ensanut.insp.mx/informes/ENSANUT2012ResultadosNacionales.pdf>. Accessed 22 February 2017.
4. Angus DC, Linde-Zwirble WT, Lidicker J, Clermont G, Carcillo J, Pinsky MR. Epidemiology of severe sepsis in the United States: Analysis of incidence, outcome, and associated costs of care. *Crit Care Med* 2001;29:1303-10.
5. Flegal KM, Kit BK, Orpana H, Graubard BI. Association of all-cause mortality with overweight and obesity using standard body mass index categories: A systematic review and meta-analysis. *JAMA* 2013;309:71-82.
6. Institute for Health Metrics and Evaluation. Global Burden of Disease (GBD2010). Available at: <http://vizhub.healthdata.org/gbd-compare/>. Accessed 22 February 2017.
7. Cottam DR, Mattar SG, Barinas-Mitchell E, Eid G, Kuller L, Kelley DE, et al. The chronic inflammatory hypothesis for the morbidity associated with morbid obesity: Implications and effects of weight loss. *Obes Surg* 2004;14:589-600.
8. Vachharajani V, Vital S. Obesity and sepsis. *J Intensive Care Med* 2006;21:287-95.

9. Vachharajani V, Russell JM, Scott KL, Conrad S, Stokes KY, Tallam L, et al. Obesity exacerbates sepsis-induced inflammation and microvascular dysfunction in mouse brain. *Microcirculation* 2005;12:183-94.
10. Singer G, Stokes KY, Terao S, Granger DN. Sepsis-induced intestinal microvascular and inflammatory responses in obese mice. *Shock* 2009;31:275-9.
11. Teoh H, Quan A, Bang KW, Wang G, Lovren F, Vu V, et al. Adiponectin deficiency promotes endothelial activation and profoundly exacerbates sepsis-related mortality. *Am J Physiol Endocrinol Metab* 2008;295:E658-64.
12. Roberts DL, Dive C, Renehan AG. Biological mechanisms linking obesity and cancer risk: New perspectives. *Annu Rev Med* 2010;61:301-16.
13. Calle E, Rodríguez C, Walke-Thurmoid K, Thun MJ. Overweight obesity and mortality from cancer in a prospectively studied cohort of US adults. *N Engl J Med* 2003;348:1625-38.
14. Kuperman EF, Showalter JW, Lehman EB, Leib AE, Kraschnewski JL. The impact of obesity on sepsis mortality: A retrospective review. *BMC Infect Dis* 2013;13:377.
15. Wacharasint P, Boyd JH, Russell JA, Walley KR. One size does not fit all in severe infection: Obesity alters outcome, susceptibility, treatment, and inflammatory response. *Crit Care* 2013;17:R122.
16. Arabi YM, Dara SI, Tamim HM, Rishu AH, Bouchama A, Khedr MK, et al. Clinical characteristics, sepsis interventions and outcomes in the obese patients with septic shock: An international multicenter cohort study. *Crit Care* 2013;17:R72.
17. Huttunen R, Laine J, Lumio J, Vuento R, Syrjanen J. Obesity and smoking are factors associated with poor prognosis in patients with bacteraemia. *BMC Infect Dis* 2007;7:13.
18. Gaulton TG, Weiner MG, Morales KH, Gaieski DF, Mehta J, Lautenbach E. The effect of obesity on clinical outcomes in presumed sepsis: A retrospective cohort study. *Intern Emerg Med* 2014;9:213-21.
19. Seymour CW, Liu VX, Iwashyna TJ, Brunkhorst FM, Rea TD, Scherag A, et al. Assessment of clinical criteria for sepsis: For the Third International Consensus Definitions for Sepsis and Septic Shock (Sepsis-3). *JAMA* 2016;315:762-74.

20. Knaus WA, Draper EA, Wagner DP, Zimmerman JE. APACHE II. A severity of disease classification system. *Crit Care Med* 1985;13:818-29.
21. Vincent JL, De Mendonça A, Cantraine F, Moreno R, Takala J, Suter PM, et al. Use of the SOFA score to assess the incidence of organ dysfunction/failure in intensive care units: Results of a multicenter, prospective study. Working group on "sepsis-related problems" of the European Society of Intensive Care Medicine. *Crit Care Med* 1998;26:1793-800.
22. Vincent JL, Moreno R, Takala J, Willatts S, De Mendonça A, Bruining H, et al. The SOFA (sepsis-related organ failure assessment) score to describe organ dysfunction/failure. On behalf of the Working Group on Sepsis-Related Problems of the European Society of Intensive Care Medicine. *Intensive Care Med* 1996;22:707-10.
23. Namendys-Silva SA, Silva-Medina MA, Vásquez-Barahona GM, Baltazar-Torres JA, Rivero-Sigarroa E, Fonseca-Lazcano JA, et al. Application of a modified sequential organ failure assessment score to critically ill patients. *Braz J Med Biol Res* 2013;46:186-93.
24. Oken MM, Creech RH, Tormey DC, Horton J, Davis TE, McFadden ET, et al. Toxicity and response criteria of the Eastern Cooperative Oncology Group. *Am J Clin Oncol* 1982;5:649-55.
25. Kiraly L, Hurt RT, Van Way CW 3rd. The outcomes of obese patients in critical care. *JPEN J Parenter Enteral Nutr* 2011;35:29S-35S.
26. Prescott HC, Chang VW, O'Brien JM Jr, Langa KM, Iwashyna TJ. Obesity and 1-year outcomes in older Americans with severe sepsis. *Crit Care Med* 2014;42:1766-74.
27. Wurzinger B, Dünser MW, Wohlmuth C, Deutinger MC, Ulmer H, Torgersen C, et al. The association between body-mass index and patient outcome in septic shock: A retrospective cohort study. *Wien Klin Wochenschr* 2010;122:31-6.
28. Ostchega Y, Hughes JP, Terry A, Fakhouri TH, Miller I. Abdominal obesity, body mass index, and hypertension in US adults: NHANES 2007-2010. *Am J Hypertens* 2012;25:1271-8.
29. Sharp JT, Henry JP, Sweany SK, Meadows WR, Pietras RJ. The total work of breathing in normal and obese men. *J Clin Invest* 1964;43:728-39.

30. Pelosi P1, Croci M, Ravagnan I, Tredici S, Pedoto A, Lissoni A, et al. The effects of body mass on lung volumes, respiratory mechanics, and gas exchange during general anesthesia. *Anesth Analg* 1998;87:654-60.
31. Behazin N, Jones SB, Cohen RI, Loring SH. Respiratory restriction and elevated pleural and esophageal pressures in morbid obesity. *J Appl Physiol* (1985) 2010;108:212-8.
32. Suratt PM, Wilhoit SC, Hsiao HS, Atkinson RL, Rochester DF. Compliance of chest wall in obese subjects. *J Appl Physiol* 1984;57:403-7.
33. Salome CM, King GG, Berend N. Physiology of obesity and effects on lung function. *J Appl Physiol* 2010;108:206-11.
34. Gong MN, Bajwa EK, Thompson BT, Christiani DC. Body mass index is associated with the development of acute respiratory distress syndrome. *Thorax* 2010;65:44-50.
35. El-Solh A, Sikka P, Bozkanat E, Jaafar W, Davies J. Morbid obesity in the medical ICU. *Chest* 2001;120:1989-97.
36. Gruberg L, Weissman NJ, Waksman R, Fuchs S, Deible R, Pinnow EE, et al. The impact of obesity on the short-term and long-term outcomes after percutaneous coronary intervention: The obesity paradox? *J Am Coll Cardiol* 2002;39:578-84.
37. González MC, Pastore CA, Orlandi SP, Heymsfield SB. Obesity paradox in cancer: New insights provided by body composition. *Am J Clin Nutr* 2014;99:999-1005.
38. Niedziela J, Hudzik B, Niedziela N, Gąsior M, Gierlotka M, Wasilewski J, et al. The obesity paradox in acute coronary syndrome: A meta-analysis. *Eur J Epidemiol* 2014;29:801-12.
39. Kalantar-Zadeh K, Streja E, Kovesdy CP, Oreopoulos A, Noori N, Jing J, et al. The obesity paradox and mortality associated with surrogates of body size and muscle mass in patients receiving hemodialysis. *Mayo Clin Proc* 2010;85:991-1001.
40. Curtis JP, Selter JG, Wang Y. The obesity paradox: Body mass index and outcomes in patients with heart failure. *Arch Intern Med* 2005;165:55-61.
41. Frumovitz M, Jhingran A, Soliman PT, Klopp AH, Schemeler K, Eifel PJ. Morbid obesity as an independent risk factor for disease-specific mortality in women with cervical cancer. *Obstet Gynecol* 2014;124(6):1098-104.

42. Arce Salinas C, Aguilar-Ponce JL, Villarreal-Garza C, Lara-Medina FU, Olvera-Caraza D, Alvarado Miranda A, et al. Overweight and obesity as poor prognostic factors in locally advanced breast cancer patients. *Breast Cancer Res Treat* 2014;146:183-8.

Table I. Clinical characteristics of patients on ICU admission

<i>Characteristics</i>	<i>Results</i>
Age, years (mean \pm SD)	48.4 \pm 16.6
Gender (female), n (%)	257 (53.2)
<i>Body mass index (BMI), (median with IQR)</i>	26.1 (22.7-29.1)
≥ 25 kg/m ² , n (%)	286 (59.2)
< 25 kg/m ² , n (%)	197 (40.8)
Low weight (BMI ≤ 18.5 kg/m ²), n (%)	16 (3.3)
Normal weight (18.5-24.99 kg/m ²), n (%)	181 (37.5)
Overweight (25-29.99 kg/m ²), n (%)	192 (39.8)
Obesity (30-39.99 kg/m ²), n (%)	82 (17.1)
Morbid obesity (≥ 40), n (%)	12 (2.5)
<i>Admission source</i>	
Operating room, n (%)	235 (48.7)
Medical wards, n (%)	222 (46)
Emergency department, n (%)	26 (5.4)
<i>Scoring systems</i>	
APACHE (median with IQR)	16 (12-21)
MEXSOFA (median with IQR)	7 (4-10)
SOFA (median with IQR)	6 (3-9)

Type of oncologic disease

Solid tumors, n (%)	354 (73.3)
Hematologic malignancy, n (%)	129 (26.7)

Comorbidities

Systemic arterial hypertension, n (%)	88 (18.8)
Type 2 diabetes mellitus, n (%)	84 (17.4)
Stroke, n (%)	18 (3.7)
Pulmonary thromboembolism, n (%)	15 (3.1)

<i>Sepsis, n (%)</i>	157 (32.5)
----------------------	------------

ICU treatment

Mechanical ventilation requirement, n (%)	316 (65.4)
Hemodialysis requirement, n (%)	7 (1.4)
Vasopressor requirement, n (%)	280 (58)

Organ failures

Number of organ failures at admission	
≤ 2, n (%)	383 (79.3)
> 2, n (%)	100 (20.7)
Hemodynamic failure, n (%)	280 (58)
Respiratory failure, n (%)	273 (56.5)
Hematologic failure, n (%)	90 (18.6)
Renal failure, n (%)	79 (16.4)
Hepatic failure, n (%)	15 (3.1)

Performance status

0-2, n (%)	403 (83.4)
3-4, n (%)	80 (16.6)
Days of ICU stay, (median, IQR)	3 (1-3)

**Nutrición
Hospitalaria**

Days on mechanical ventilation, (median, IQR)	4 (1-7)
ICU mortality, n (%)	108 (22.4)
Hospital mortality, n (%)	158 (32.7)

SD: Standard deviation; IQR: Interquartile range; SOFA: Sequential Organ Failure Assessment; APACHE: Acute Physiology and Chronic Health Evaluation; MEXSOFA: Mexican Sequential Organ failure Assessment; ICU: Intensive Care Unit. Performance status was measured using the Eastern Cooperative Oncology Group performance status scale as follows: 0: fully active, able to carry on all pre-disease performance without restriction; 1: restricted in physically strenuous activity but ambulatory and able to carry out; 2: ambulatory and capable of all self-care but unable to carry out any work activities; up and about more than 50% of waking hours work of a light or sedentary nature (e.g., light house work, office work); 3: capable of only limited self-care, confined to bed or chair more than 50% of waking hours; 4: completely disabled; cannot carry on any self-care; totally confined to bed or chair (24).

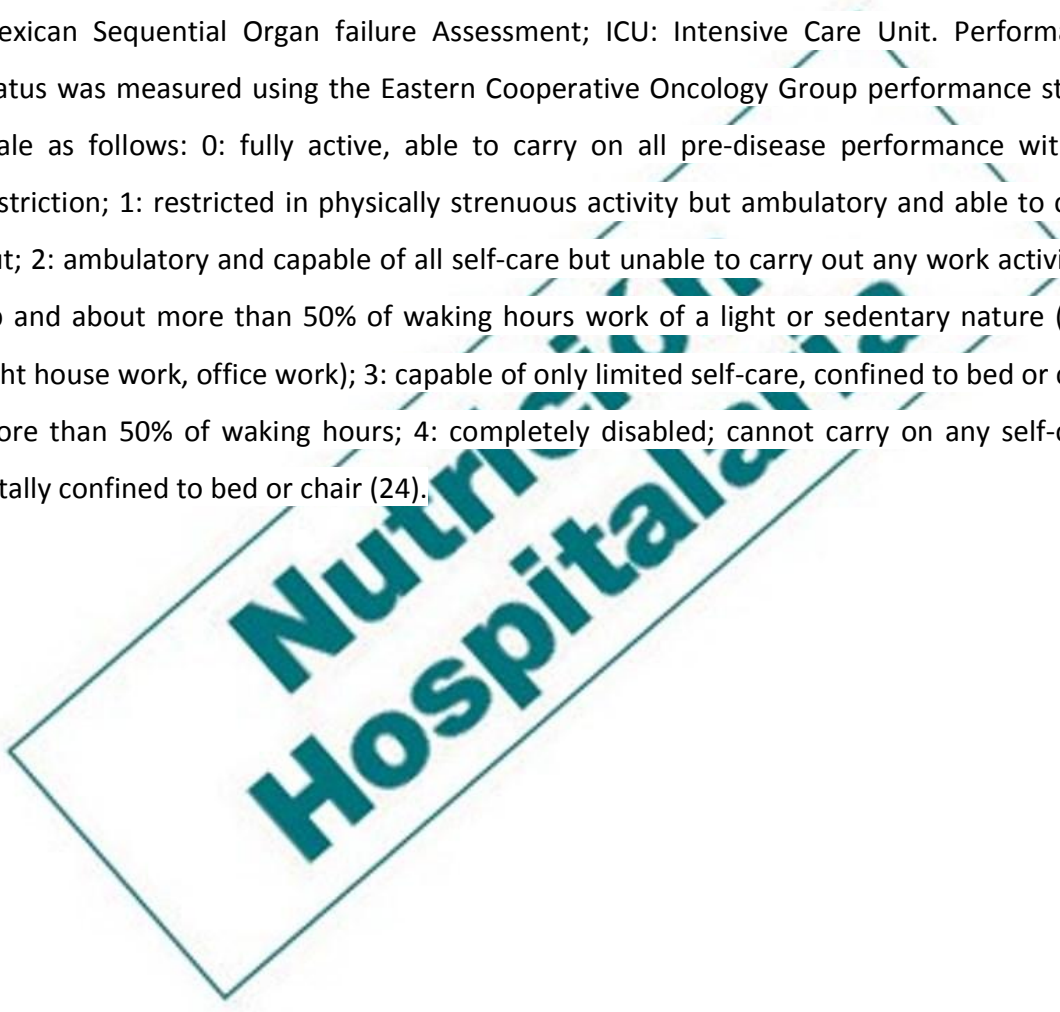


Table II. Comparison of clinical features of critically ill cancer patients according to body mass index

<i>Characteristics</i>	<i>BMI < 25 kg/m²</i> <i>n = 197</i>	<i>IMC ≥ 25 kg/m²</i> <i>n = 286</i>	<i>p</i>
Age (mean ± SD)	45.5 ± 17.5	50.5 ± 15.7	0.001
Gender			
Female, n (%)	101 (51.2%)	156 (54.5%)	0.478
Performance status			
0-2, n (%)	161 (81.7%)	242 (84.6%)	0.401
3-4, n (%)	36 (18.2%)	44 (15.3%)	
Scoring systems			
APACHE (median, IQR)	16 (12-22)	16 (11-21)	0.323
MEXSOFA (median, IQR)	7 (4-10)	7 (4-10)	0.586
SOFA (median, IQR)	6 (3-9)	6.5 (3-9)	0.810
Length of stay in ICU (median, IQR)	3 (1-6)	3 (1-7)	0.900
Days on mechanical ventilation (median, IQR)	3 (1-6)	4 (1-8)	0.122
Number of organ failures:			
≤ 2, n (%)	152 (77.1)	231 (80.7)	0.336
> 2, n (%)	45 (22.8)	55 (19.2)	
Hemodynamic failure, n (%)	123 (62.4)	157 (54.8)	0.099
Respiratory failure, n (%)	108 (54.8)	165 (57.6)	0.532
Hematologic failure, n (%)	40 (20.3)	50 (17.4)	0.434
Renal failure, n (%)	33 (16.7)	46 (16)	0.845
Hepatic failure, n (%)	5 (2.5)	10 (3.4)	0.551

Sepsis, n (%)	64 (32.4)	93 (32.5)	0.994
Mechanical ventilation requirement	127 (64.4)	189 (66)	0.713
ICU mortality, n (%)	42 (21.3)	66 (23)	0.649
Hospital mortality, n (%)	69 (35)	89 (31)	0.387

DS: Standard deviation; IQR: Interquartile range; SOFA: Sequential Organ Failure Assessment; APACHE: Acute Physiology and Chronic Health Evaluation; MEXSOFA: Mexican Sequential Organ Failure Assessment; ICU: Intensive Care Unit. Performance status was measured using the Eastern Cooperative Oncology Group performance status scale as follows: 0: fully active, able to carry on all pre-disease performance without restriction; 1: restricted in physically strenuous activity but ambulatory and able to carry out; 2: ambulatory and capable of all self-care but unable to carry out any work activities; up and about more than 50% of waking hours work of a light or sedentary nature (e.g., light house work, office work); 3: capable of only limited self-care, confined to bed or chair more than 50% of waking hours; 4: completely disabled; cannot carry on any selfcare; totally confined to bed or chair (24).

Table III. Univariate and multivariate analysis of factors associated with intensive care unit death in patients with body mass index ≥ 25 kg/m² (n = 286)

<i>Variable</i>	<i>Odds ratio</i>	<i>CI</i>	<i>p</i>	<i>Odds ratio</i>	<i>CI</i>	<i>P</i>
	<i>Univariate</i>			<i>Multivariate</i>		
<i>Age, years</i>	0.98	0.96-0.99	0.038	0.99	0.97-1.00	0.307
<i>Gender (women)</i>	0.85	0.49-1.48	0.573			
<i>Sepsis</i>	2.25	1.28-3.97	0.005	1.58	0.83-3.01	0.160
<i>Invasive mechanical ventilation</i>	8.76	3.39-22.68	< 0.001			
<i>Need for vasopressors</i>	0.78	0.45-1.36	0.392			
<i>Performance status (3-4)</i>	1.49	0.73-3.05	0.270			
<i>Systemic arterial hypertension</i>	0.77	0.38-1.54	0.478			
<i>Type 2 diabetes mellitus</i>	2.47	1.06-5.76	0.035	2.24	0.88-5.69	0.088
<i>≥ 2 organic failures</i>	6.50	3.43-12.3	< 0.001	5.42	2.76-10.65	< 0.001

Goodness-of-fit (Hosmer-Lemeshow), $\chi^2 = 6.580$, $p = 0.582$, area under the receiver operating characteristic curve: 0.72 (95% CI, 0.65-0.80), $p < 0.001$. Performance status was measured using the Eastern Cooperative Oncology Group performance status scale as follows: 0: fully active, able to carry on all pre-disease performance without restriction; 1: restricted in physically strenuous activity but ambulatory and able to carry out; 2: ambulatory and capable of all self-care but unable to carry out any work activities; up and about more than 50% of waking hours work of a light or sedentary nature (e.g., light house work, office work); 3: capable of only limited self-care, confined to bed or chair more than 50% of waking hours; 4: completely disabled; cannot carry on any self-care; totally confined to bed or chair (24).

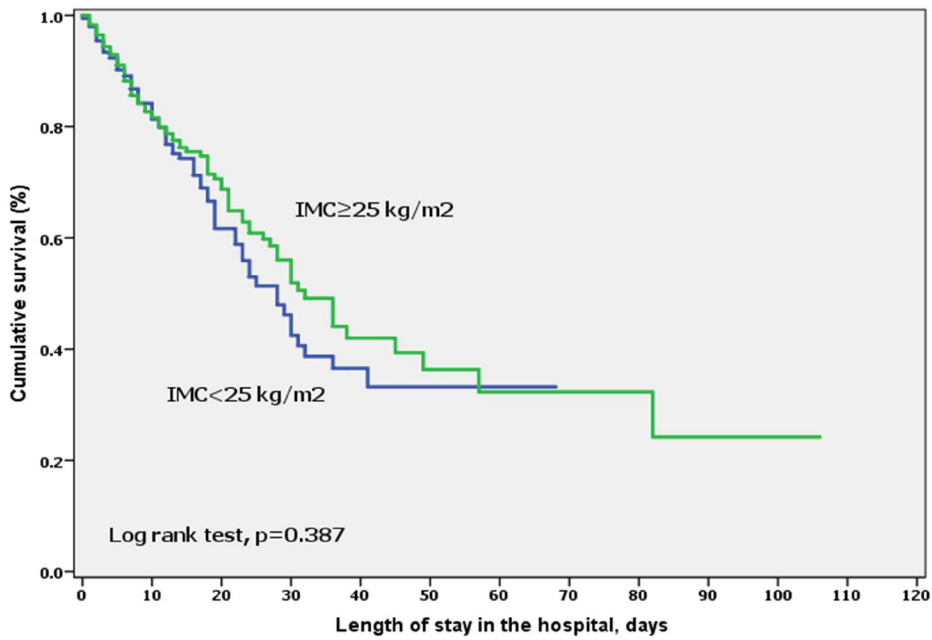


Fig. 1. Survival curves during hospital stay of critically ill patients with BMI < 25 kg/m² and ≥ 25 kg/m².